

SWEATSHIRT B&C HOODED FULL ZIP WOMEN

WW642

Sweatshirt de senhora com capuz.
Fecho completo ao tom.
2 bolsos canguru com costuras reforçadas.
Interior em French Terry Unbrushed (não cardado).
Tecnologia PST - Perfect Sweat Technology.



PST
Perfect
Sweat
Technology
QUALITY



RED

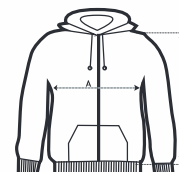


DUO
CONCEPT

WM647 + WW642
(Pág.81)



Wk682
(Pág.85)



	S	M	L	XL
A	49	52	55	59
B	59.7	59.9	62	65.2

TAMANHOS CM
(*tamanhos podem variar +/- 5%)



20% POLIESTER
80% ALGODÃO

280gr/m2



ROYAL



WHITE



BLACK



HEATHER
GREY



ROYAL
BLUE



RED